

OPEN
IN

uni_one SLIM

TRIPLE GLAZING **U_w=0,8 W/m²K**

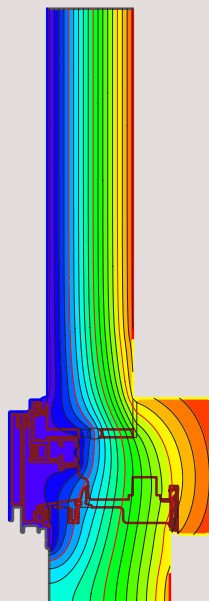


| | | |
|------------------------------|--|---|
| Material | | Wood-Aluminium |
| Thermal insulation | | U _w = 0,8 W/m ² K |
| Insulating glass | | Triple glazing thickness 44mm |
| Acoustic insulation | | R _w up to 43 dB |
| Security hardware | | Up to RC2 |
| Dimensions in mm. | | |
| Thickness of sash | | 93 x 70mm |
| Thickness of frame | | 82,5 x 99mm |
| Visible section sash + frame | | 106mm |
| Visible section middle clamp | | 116mm |
| Air permeability | | CLASS 4 |
| Water tightness | | CLASS E1050 |
| Wind load resistance | | CLASS C5 |

The thermal transmittance values are calculated according to UNI EN 10077/1-2018, UNI EN 10077/2-2018, UNI EN 10456-2008, UNI EN 673-2011 standards, in reference to a window with 1 sash WxH (1230x1480mm, $\psi_g = 0,04$ W/mK)

The air-water-wind tightness performances are estimated in reference to a window with 2 sashes WxH (1500x1500mm)

The acoustic insulation values are estimated in reference to a window with 1 sash WxH (1230x1480mm)



SLIM - 44mm glass
SOFT WOOD
U_f = 1,2 W/m²K

| U _g W/m ² K | U _w W/m ² K |
|-----------------------------------|-----------------------------------|
| 0,5 | -> 0,8 |
| 0,6 | -> 0,9 |
| 0,7 | -> 0,9 |
| 0,8 | -> 1,0 |
| 0,9 | -> 1,1 |
| 1,0 | -> 1,2 |
| 1,1 | -> 1,2 |