

magis40



ENG

ed. 06/2021

Instructions for flush
installation inside masonry
with plaster

in collaboration with



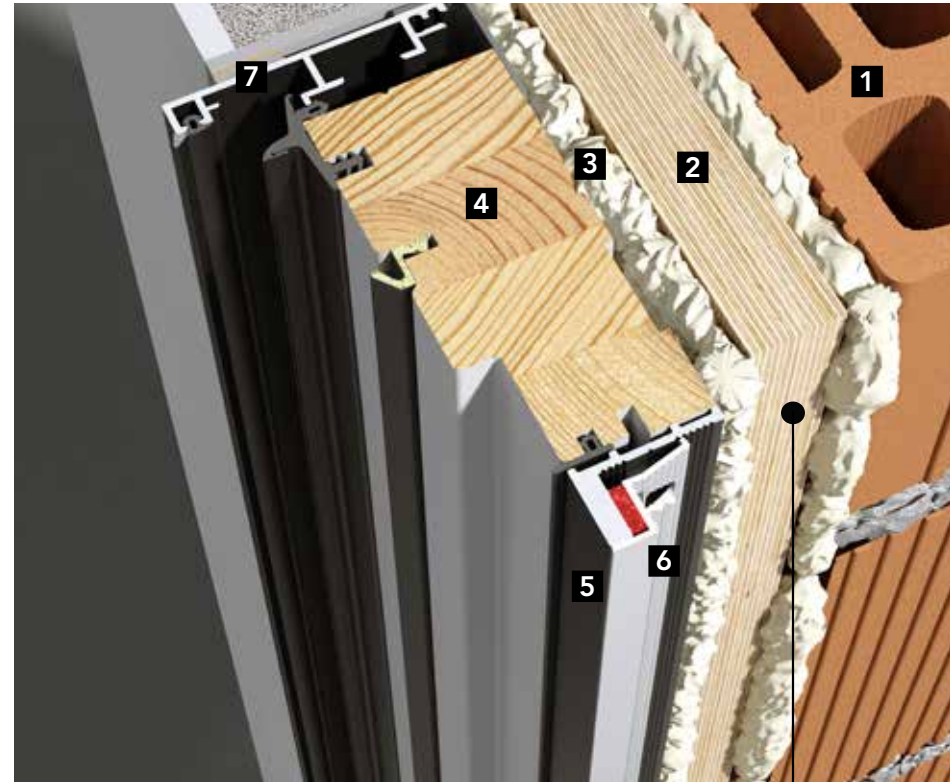
uniform
sistemi per serramenti
www.uniform.it

Produced with:
uni_one
TECHNOLOGY





1 | magis40 frame fixed to the subframe with turbo screws and sealed with polyurethane foam.



1. Masonry, hollow brick
2. Wooden subframe
3. Polyurethane foam
4. Window frame
5. Aluminium plaster profile
6. PVC plaster profile
7. Exterior aluminium frame

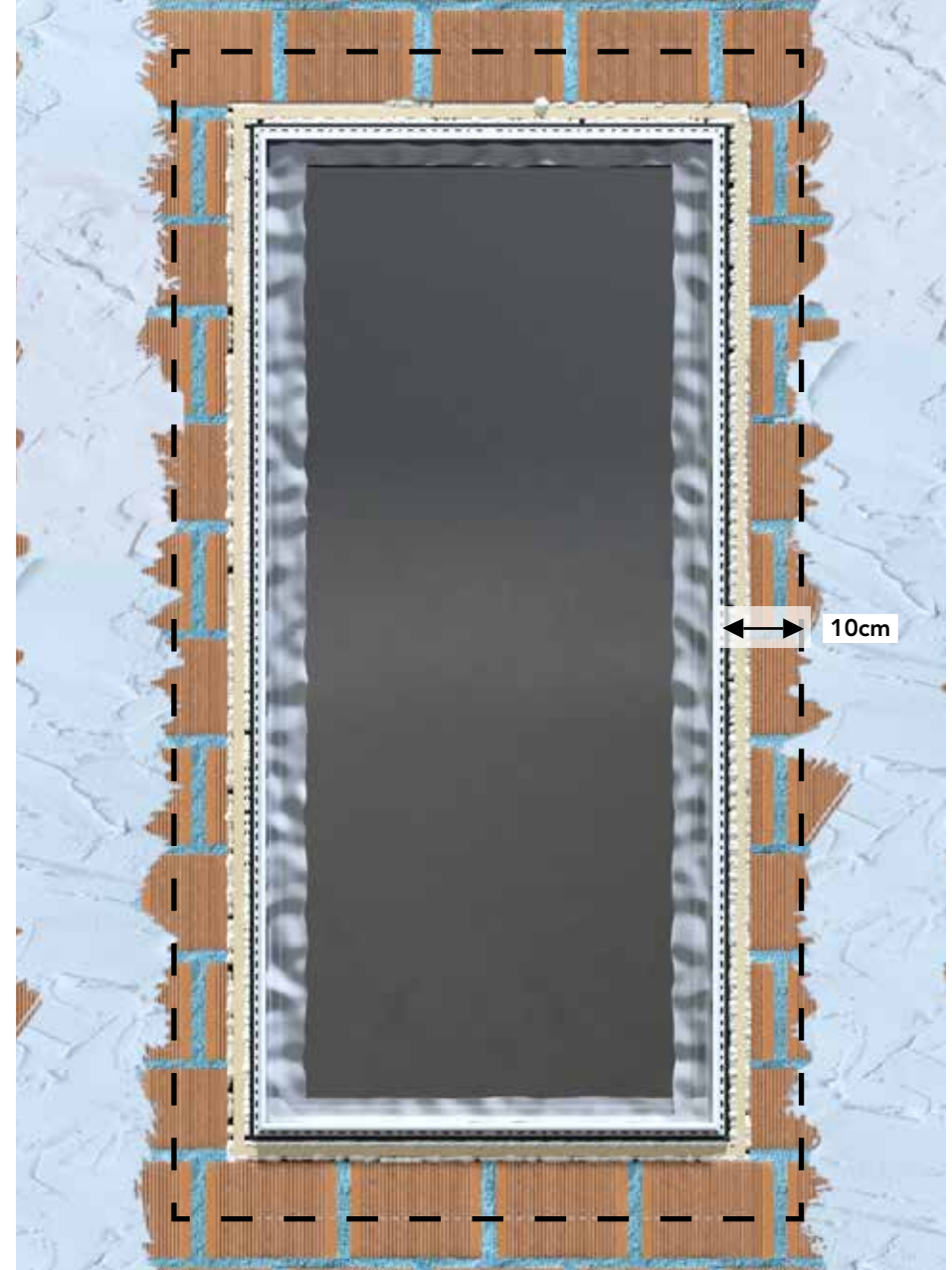
Position the frame
approximately 10mm
from the wall



2 | Protect the visible parts of the frame with specific adhesive supports and protective sheets that can be removed later.



3 | **PHASE 1:** Apply **FASSA K-OVER PLUS 3.30** premixed coat plaster + plaster on the wall.



4 | Mark a perimeter strip approximately 10cm from the outer edge of the subframe that PHASE 2 will be applied on.



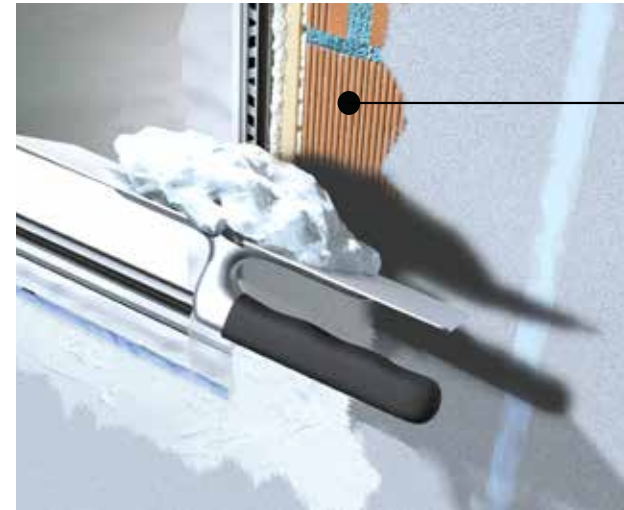
5

Insert profiles to align the skim coating.

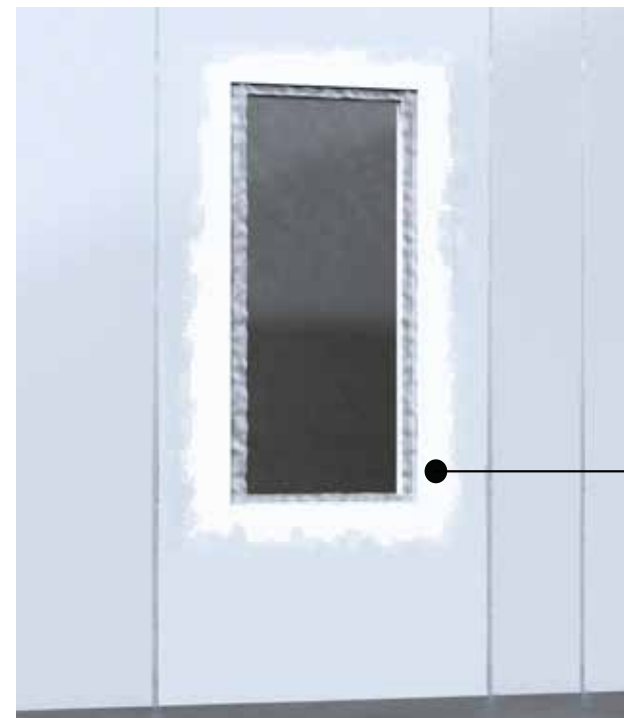


6

Check the plumbness.



Once the plaster has hardened, fill in the previously un-plastered area by manually applying a coat of FASSA K-OVER PLUS 3.30 multi-purpose premix.



Mix the fixing agent AG 15 with water in a 1:3 ratio (1 part AG 15 to 3 parts water).

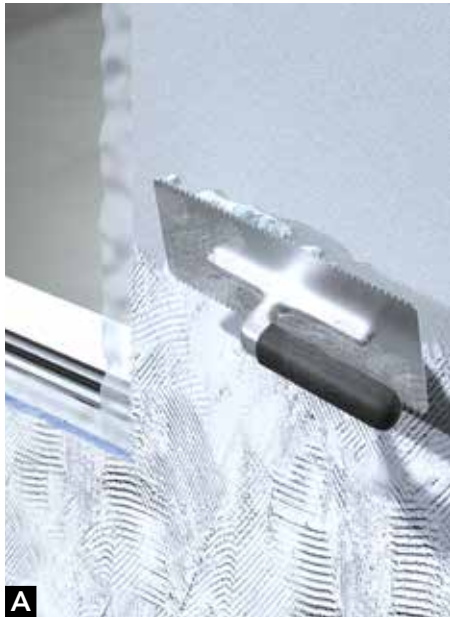
AG 15 further improves the elasticity and bonding of the product in the most critical area.

7

Complete the plasterwork of the wall, spreading the mortar thickness using the alignment profiles as reference. Then proceed to finish and skim the plaster.

8

PHASE 2: Plastering and finishing/skim coating of the perimeter strip.



9

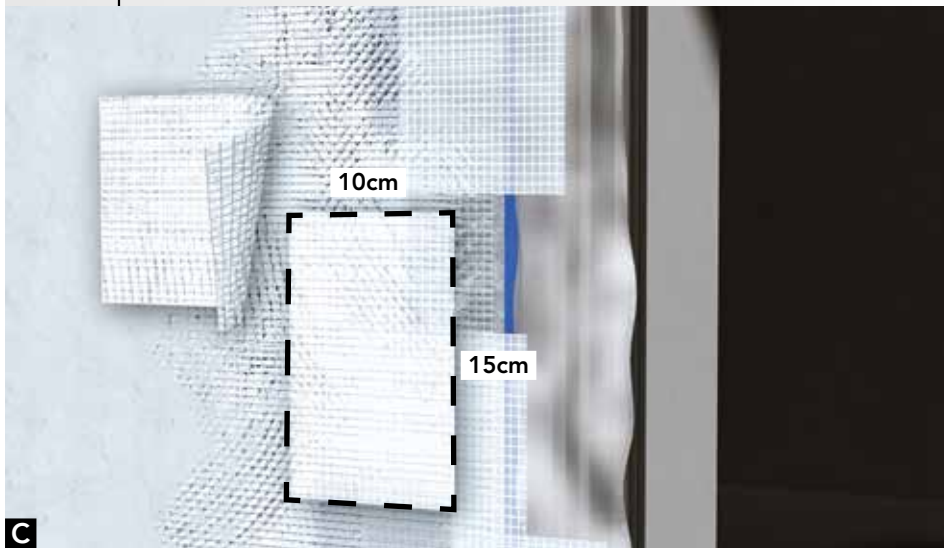
PHASE 3: Once the plaster has been fully crosslinked (~28 days):

A - Apply the first coat of **S 605** coat plaster;

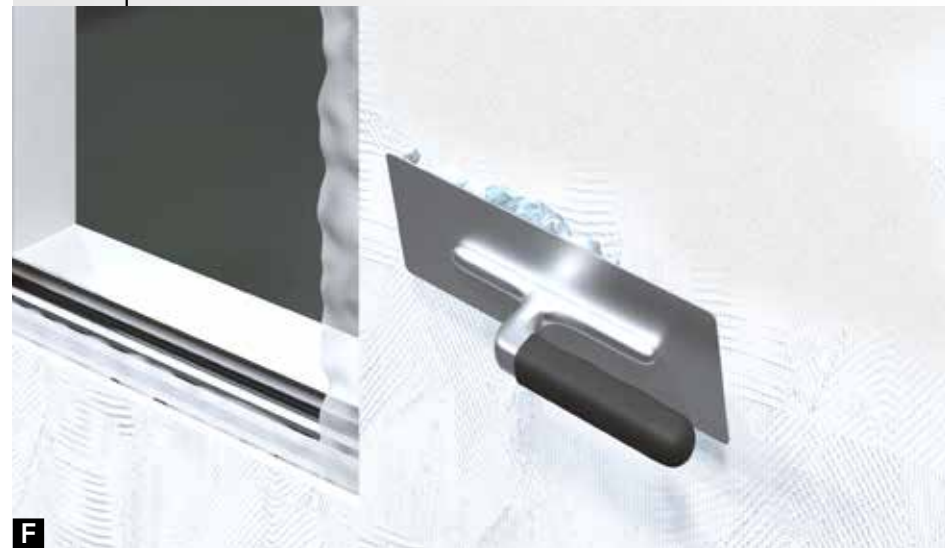
B - Apply **FASSANET 160** fibreglass reinforcing mesh;

D - Remove excess mesh along the perimeter;

E - Strengthen the corners of the window openings by applying slanted mesh pieces of approximately 40x30cm;



C - The meshes must be overlapped horizontally and vertically by at least 10cm and 15cm near the edges;



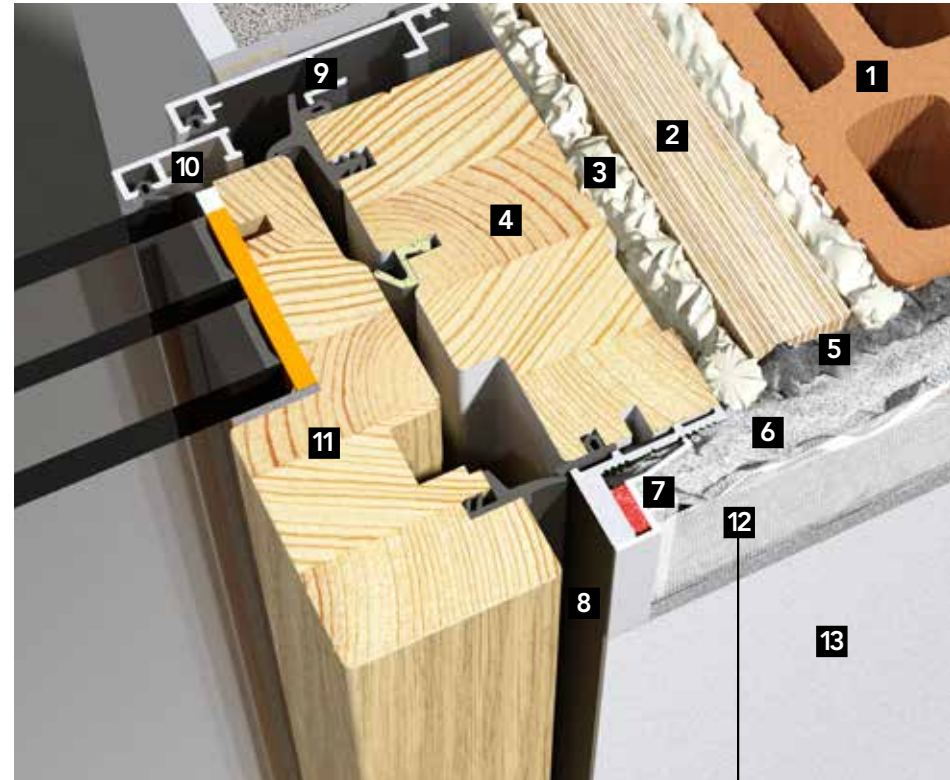
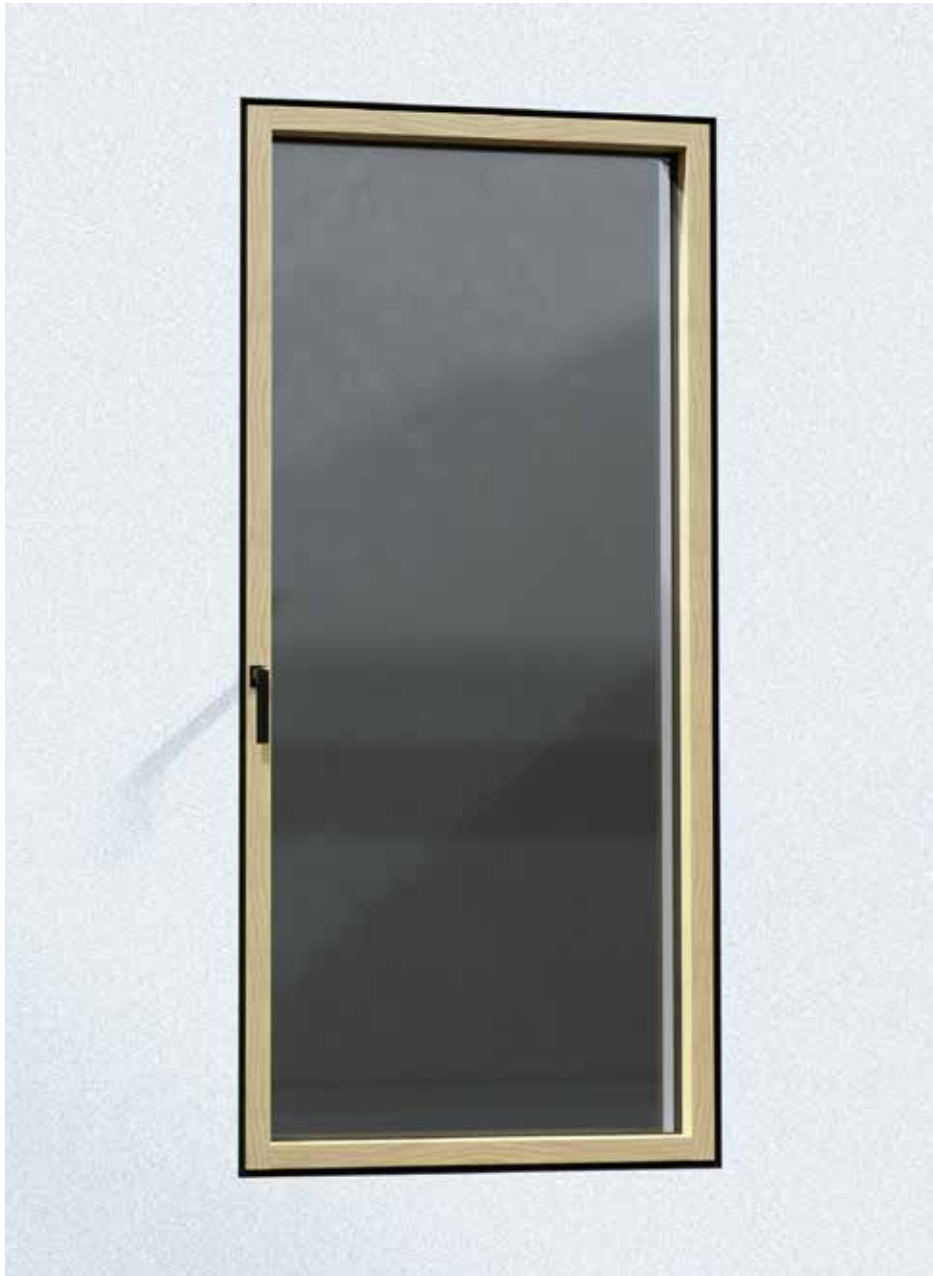
F - Apply the second coat of **S 605** coat plaster.



10 | Wall finishing.



11 | Remove the protective sheets and perform installation with calibration and centring of the magis40 sash.



1. Masonry, hollow brick
2. Wooden subframe
3. Polyurethane foam
4. Window frame
5. **FASSA K-OVER PLUS 3.30** premixed skim coat
6. First coat of **S 605** coat plaster
7. PVC plaster profile
8. Aluminium plaster profile
9. Exterior aluminium frame
10. Exterior aluminium sash
11. Window sash
12. **FASSANET 160** fiberglass reinforcing mesh
13. Second coat of finished **S 605** coat plaster

The reinforced skim coat will have the mesh embedded in the top layer and have a thickness of approximately ~3.5/4mm

12

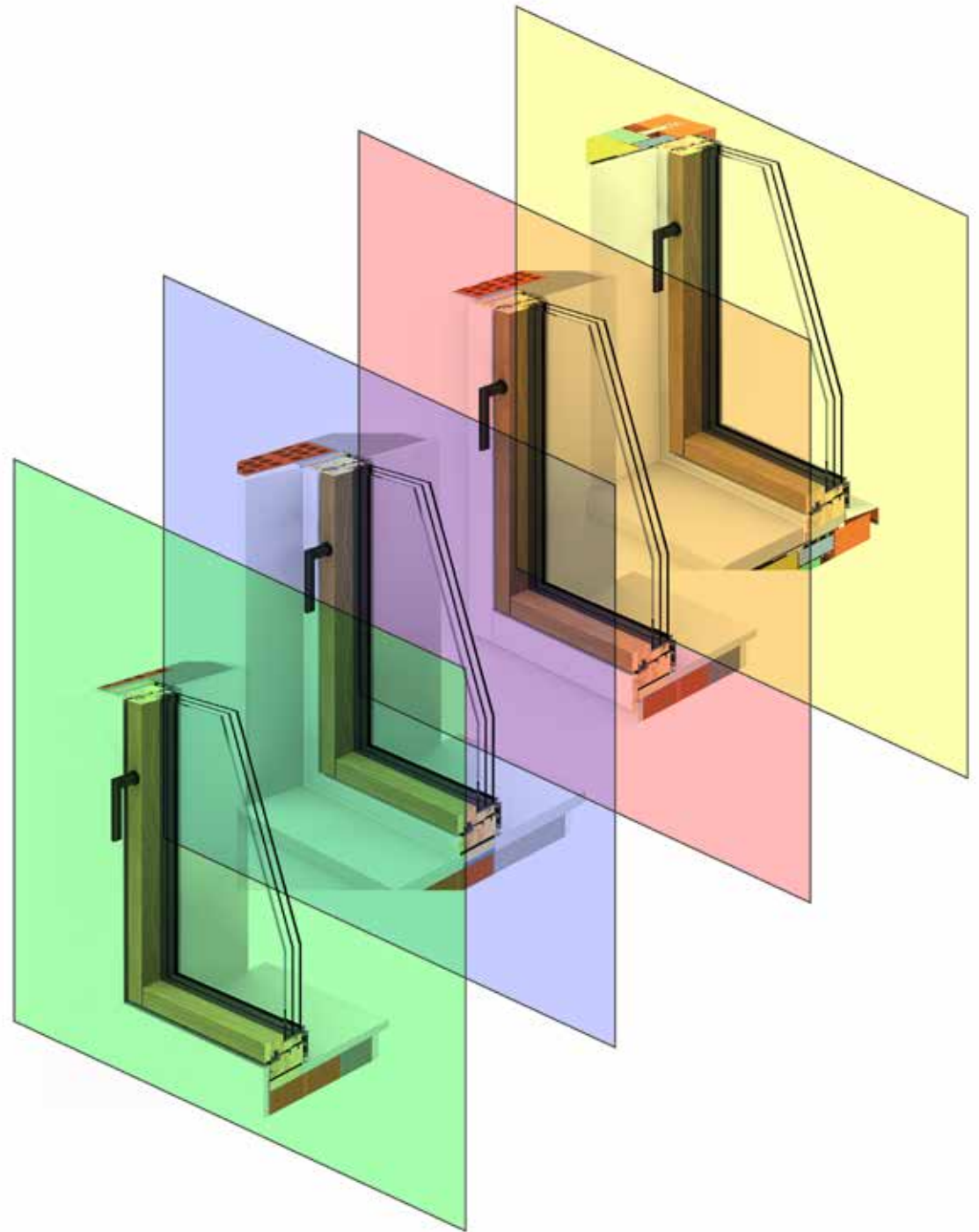
magis40 window, installation flush with interior wall with plaster.

magis40

Scan the QR-Code to know more
about all the installation solutions
provided for magis40



Technical documentation



uniform
sistemi per serramenti

via dell'Agricoltura, 36
37046 Minerbe - Verona, Italy
tel +39 0442 669669
uniform@uniform.it
www.uniform.it

U



www.sistema-uni-one.it